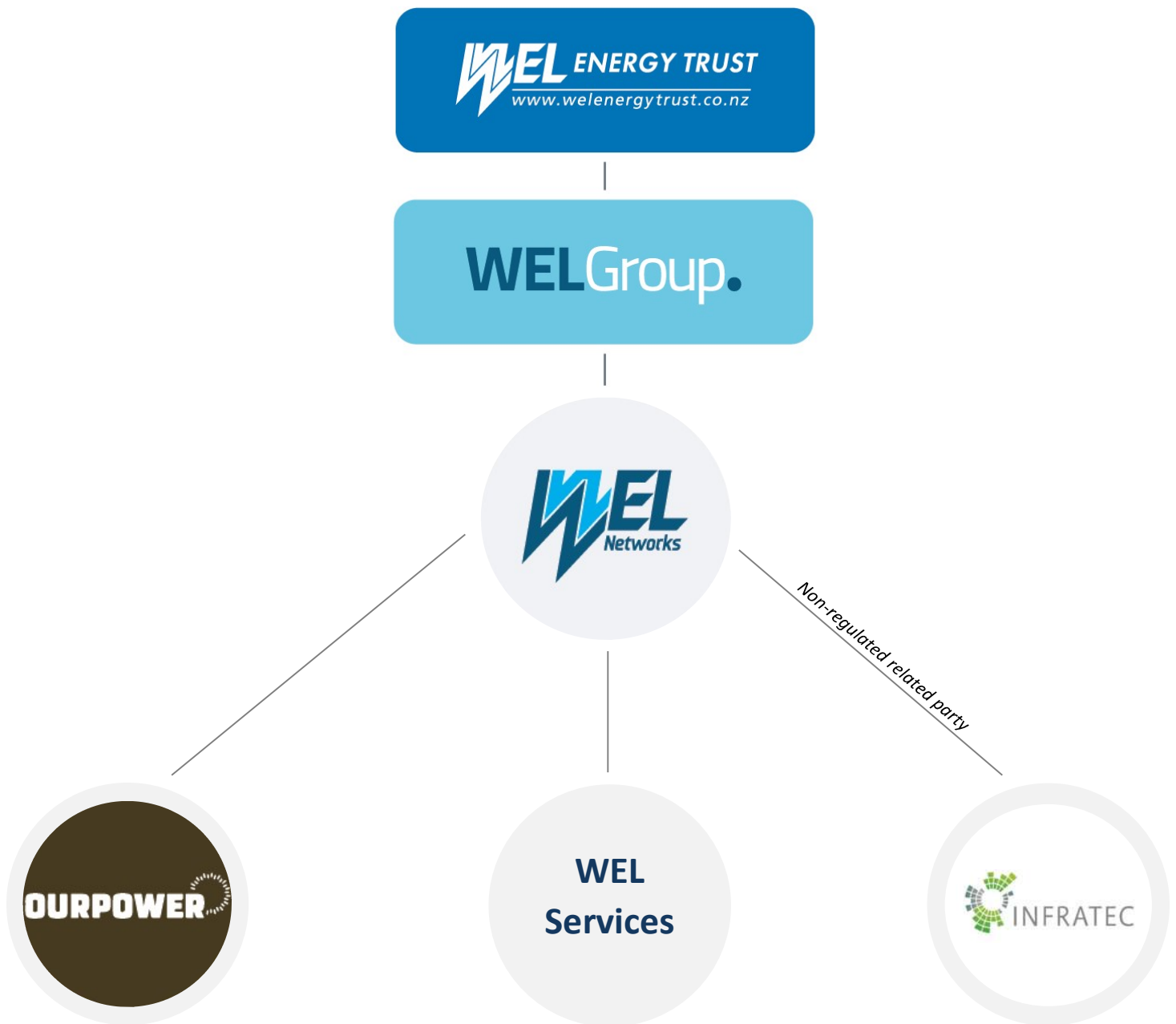


# Regulated Related Party Model



Wholly owned retail provider of power to the Waikato region.

**Annual revenue (000's):**  
Lines charges: \$2,206

Business division providing contracting services to WEL Networks.

**Annual expenditure Opex 2023 (000's):**  
Service Interruption and Emergencies: \$3,888  
Vegetation Management: \$1,146  
Routine and Corrective Maintenance and Inspection: \$1,125  
Asset Replacement and Renewal: \$1,376  
Business Support: \$2  
System Operations and Network Support: \$3

**Annual expenditure Capex 2023 (000's):**  
Consumer connection: \$1,572  
System Growth: \$298  
Asset Replacement and Renewal: \$5,318  
Asset Relocations: \$336  
Quality of Supply: \$4  
Legislative and Regulatory: \$74  
Other Reliability, Safety and Environment: \$1,023  
Non-network assets: \$7