



POSITION DESCRIPTION

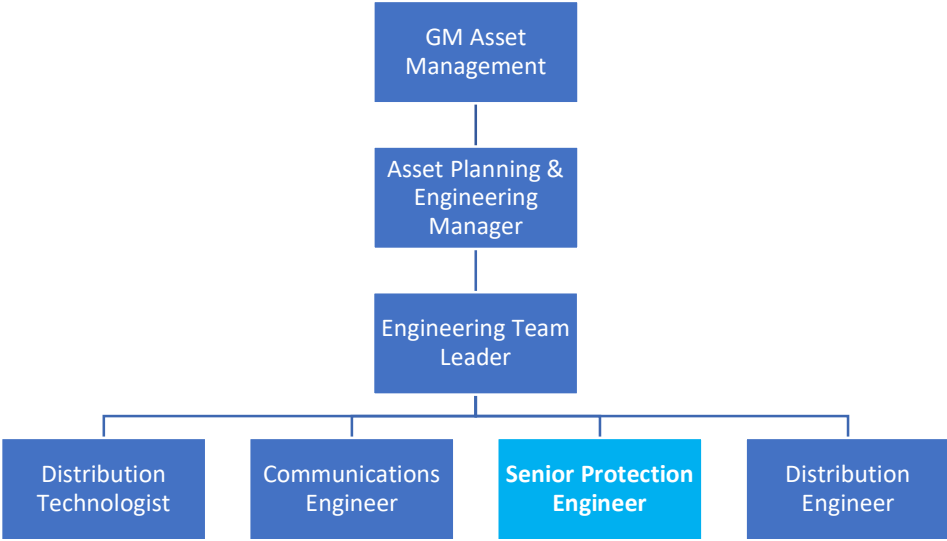


Position title:	Senior Protection Engineer		
Reports to:	Engineering Team Leader		
Group:	Asset Management	Unit:	Asset Strategy & Engineering
Revision (m/y):	3/2023	Date:	17 October 2025

Purpose

To own and lead WEL’s protection and associated control and instrumentation (C&I) systems. This includes system architecture, system performance, meeting future needs and liaising with the Lifecycle Engineering team to optimise asset replacement.

Reporting Structure



Resource Accountabilities

Staff numbers	Nil	Operating Budget	Nil
Capital Budget	Nil	Expense Authority	As per Level 5 of DFA

Performance Outputs

<p>Key Result Areas (What/Result)</p>	<p>Key Tasks / Activities (How)</p>	<p>Performance Measures (Quantity, Quality, Time, Cost)</p>
<p>Manage the protection, performance and associated control and instrumentation (C&I) systems on WEL’s network</p>	<ul style="list-style-type: none"> • Develop and maintain technical standards, technical templates and tool sets <ul style="list-style-type: none"> ○ Develop and review protection and C&I philosophies, specifications, standard design and settings ○ Consider protection and C&I requirements within a changing network environment ○ New technology evaluation and development • Provide protection and C&I services <ul style="list-style-type: none"> ○ Set calculation, file preparation and/or documentation for protection ○ Check documentations prepared by consultants • Collaborate with project team members for project work. • Track and manage the performance of the WEL protection system <ul style="list-style-type: none"> ○ Design and implement performance measures from a detailed view up to a management dashboard ○ Identify areas for improvement and lead initiatives to improve the WEL protection and control system 	<ul style="list-style-type: none"> • WEL’s protection system is road-mapped and continuous improvement implemented • Protection and C&I system reliability statistics maintained to acceptable standards • Dashboards created, monitored and performance reported through regular reporting channels and to address specific issues or events • Processes and information kept in the system are accurate and fit for purpose • The protection and C&I design and setting system is comprehensive, transparent, coherent and with a view for future • Ensure relevant parties are inducted and trained for the system • All setting and documentation issued for field works are done to best practice • The protection and C&I functions are supported to operate optimally for projects and across the business

	<ul style="list-style-type: none"> • Develop and maintain protection and C&I system processes and database <ul style="list-style-type: none"> ○ Manage the protection and C&I equipment setting lifecycle and processes ○ Maintain the databases 	
Lift WEL's protection and control capability	<ul style="list-style-type: none"> • Lead improvement projects targeting WEL's management of protection, WEL's protection performance and WEL's management of protection work. • Identify, design and lead training and development to lift the protection capability of WEL and WEL Services. • Mentor protection technicians and engineers. 	<ul style="list-style-type: none"> • WEL more effectively manages protection systems • WEL's protection is quicker, safer and more effective • Staff within WEL and WEL Services are capable of addressing a wider range of protection challenges in less time • Protection technicians and engineers develop the collective understanding and experience to undertake a full range of protection design and development tasks
Design WEL's protection and control system to enable future distribution technology	<ul style="list-style-type: none"> • Identify, design and lead projects that test and prove WEL's ability to incorporate new technology into the WEL system. • Contribute protection guidance to the DSO Engineering Manager and other technology initiatives. 	<ul style="list-style-type: none"> • By 2025 WEL have a protection design standard for: <ul style="list-style-type: none"> ○ Network connected battery ○ Network connected micro-grid ○ Network connected solar and other DER
Complete key protection tasks	<ul style="list-style-type: none"> • Identify opportunities for WEL to complete more of our own protection work. 	<ul style="list-style-type: none"> • Measure the value of work that can now be completed in-house versus using consultants

	<ul style="list-style-type: none"> • Complete the highest value protection work. • Lead and manage WEL Services to complete protection and control work to reduce the value of work contracted to external parties (not direct line management). • Review the work of internal and external protection work completed for WEL. 	<ul style="list-style-type: none"> • WEL have the capability to complete all types of protection work excluding peer review in house • Track and improve the effectiveness of using WEL Services to complete protection and control work
Secondary asset lifecycle management	<ul style="list-style-type: none"> • Support Lifecycle Engineering Team in the development, maintenance and execution of the protection asset lifecycle and spares strategy. 	<ul style="list-style-type: none"> • Protection asset status and strategy are understood and reviewed on an annual basis
Provide general engineering support to the business as a member of the Engineering Team	<ul style="list-style-type: none"> • Power system issue diagnostic, fault and event analysis in both proactive and reactive manner. • Identify the need for internal systems and processes to support the network requirements. • Perform the role of Commissioning Engineer for the assigned projects. • Develop and prepare project or business plan. • Power system modelling for operational planning as needed. 	<ul style="list-style-type: none"> • Issues are analysed and action plan proposed in an efficient manner • Timeliness and performance are met of assigned projects
To contribute to the continuous improvement of asset management	<ul style="list-style-type: none"> • While contributing to the design, planning, installation, maintenance, operation, 	<ul style="list-style-type: none"> • Active support for objectives and outcomes as detailed is evidenced

	<p>servicing, renewal, and disposal of WEL's permanently connected Network Assets and Network Management Systems:</p> <ul style="list-style-type: none"> ○ Participate in Asset Management activities that align to the Asset Management Policy ○ Contribute to the achievement of WEL's Asset Management Objectives (as detailed in the Strategic Asset Management Plan (SAMP)) <ul style="list-style-type: none"> ● Support Asset Management assurance initiatives 	<ul style="list-style-type: none"> ● WEL demonstrates excellence in asset management through retention of ISO 55001 Asset Management Standard certification
Participate and contribute to wider engineering projects	<ul style="list-style-type: none"> ● Undertake special projects for WEL when required. ● Undertake continuous improvement projects as and when required. 	<ul style="list-style-type: none"> ● Achievement of agreed project measures
Targeting "Best in Safety"	<ul style="list-style-type: none"> ● Investigate and implement protection changes that reduce risk and improve safety. ● Promotion of good safety management practices. ● Participation in safety and wellness activities. ● Being a safety leader. 	<ul style="list-style-type: none"> ● Implement safety improvements through protection and C&I initiatives ● WEL's health and safety policies and procedures are adhered to at all times

<p>To work in and promote a 'Best in Service' attitude to all endeavours</p>	<ul style="list-style-type: none">• Engage within the business and with community / external stakeholders in a way that supports 'Best in Service', always.	<ul style="list-style-type: none">• WEL's reputation is enhanced in the community• You are known for your excellent customer service
---	---	---

Person Specification

Qualifications	Essential	<ul style="list-style-type: none"> • BEng or tertiary level qualification in electrical engineering
	Desirable	<ul style="list-style-type: none"> • Power System Protection qualification such as the PSP course or equivalent
Experience	Essential	<ul style="list-style-type: none"> • Minimum of ten years' direct experience in the field of protection systems, designing architectures, setting, documentation and lifecycle management
	Desirable	<ul style="list-style-type: none"> • Strong field engineering experience, such as the commissioning of HV protection system • Knowledge of WEL's network
Role Specific Competencies	<ul style="list-style-type: none"> • Attitude: Willingness to develop and strive for excellence. Great attention to detail. • Planning and Organising: Organises and schedules events, activities and resources. Sets up and monitors timescales and plans. • Problem Solving & Analysis: Analyses issues and breaks them down into their component parts. Makes systematic and rational judgment based on relevant information. • Creativity / Innovation: Generates new ideas and imaginative approaches to work related issues. Identifies fresh approaches and shows a willingness to question traditional thinking. • Lateral Thinker: Lateral thinking is required to ensure that appropriate investment decisions are made with regard to balancing the OPEX / CAPEX trade-off for the overall performance of WEL's assets. • Flexibility/Adaptability/Teamwork: Effectively responds to change. Adjusts to and accepts changes in direction and priorities. Maintains group/team cohesiveness to achieve common tasks or goals. Actively seeks out and listens to the views and ideas of others. • Communication: Effective communicator with internal providers and external agencies, in adherence to defined processes and procedures. • Relationship Management / Client Focus: Puts the client first and is eager to help grow their business through innovation. Works hard to meet the customer needs and look after their interests. • Action Orientation: Demonstrates a readiness to make decisions, take initiative and originate actions. 	

Our Purpose

Enabling our *communities to thrive*

Our Vision

To create and support an *innovative and sustainable energy future*

Best in Service

So we have the *trust of our community*



Best in Safety

Every Day - *Home Safe*



Our Values



Agile

We listen to ideas, we explore opportunities and we adapt to changing situations with an open mind. When change is needed we make sure we understand why and we make it work. We're flexible and we respond professionally to change.



Build the business

We make sure our day to day activity is sound while exploring ways to improve the way we work or things we do. We often ask "is there a better way to do this?" and we investigate options.



Care for each other, the customer and our assets

We work as a team across the business to do things the right way. We treat others with respect, listening to their needs so we can deliver a reliable and safe service to our communities.



Do the right thing

We make decisions with integrity and when we can, we help others make the right decision for their situation. We're open, honest and trustworthy. We speak up if we feel we should and we listen to others.



Every Day - Home Safe

We lead by example to keep ourselves, our workmates and our communities safe. We use the right equipment, we challenge unsafe acts and we say no if we think it's not safe.